

Nerdy Nesting Bowls Collection



Designed by Angela Warren-Mixson
Of Crafty Ridge Designs
CraftyRidge@gmail.com
www.Facebook.com/CraftyRidge

Nerdy Nesting Bowls

By Crafty Ridge



Designed by Angela Warren-Mixson
Of Crafty Ridge Designs
CraftyRidge@gmail.com
www.Facebook.com/CraftyRidge



Perfect for your desk or bookshelf!

Materials

- Yarn: Worsted Weight, 2.5 oz. See Color Key above each bowl for colors
- Hook: G / 4.0 mm
- Notions: Yarn needle, stitch marker

Sizing

- These measurements are approximated, and actual subjects may vary.
- Small Chewbacca Belt Bowl measures 3.5" wide by 3.5" tall

Medium R2D2 Bowl measures 5" wide by 4" tall

Large TIE Fighter bowl measures 7" wide by 4" tall

- Gauge: 4sc and 5 rows is 1" Gauge done in sc with G hook

Pattern Key

- Ch: Chain
- Sc: Single Crochet
- Sl St: Slip Stitch

Experience Level

- Advanced Beginner

Skills Necessary

- Basic Single Crochet
- Basic Color Changing

What is Tapestry Crochet? Tapestry crochet is basic crochet stitches with the use of more than one color

- If you know how to crochet and can do a basic single crochet and change colors than you already know the basics of tapestry crochet.
- Unlike in Intarsia (currently popular with graphghans) our additional color or colors is carried along while you make your stitches.
- The color you are not using stays hidden on the inside of those stitches, until you want to switch colors.

Basic Single Crochet: Insert hook in indicated stitch, yarn over, pull up loop, yarn over, pull through both loops.

Color changes: Continue with your Basic Single Crochet working up until the stitch before your color change, insert hook in indicated stitch, yarn over, pull up loop, STOP HERE, this is where the new color comes in. You will then use the new color to pull through both loops, finishing this stitch and then beginning the next single crochet with the new color.

Special Pattern Notes:

- Entire pattern is worked in a continuous spiral until the last row.
- To keep track of progress use a stitch marker at the beginning of each row.
- You will carry the yarn you are not using throughout the pattern.
- Be mindful of tension when starting new colors, pulling them to tight will cause puckering in your finished piece. Leaving them to loose will cause them to peak out a bit more on the wrong side.
- I begin with a Magic Circle; however you can use the chain 3 method if it is more comfortable to you.
- I will write out the rows with color changes as such: 5w, 4b, 3w (This will indicate the amount of stitches in each color. 5 white, 4 black, 3 white)
- You can also refer to graphed images at bottom of each pattern for color changes. You will need to turn page with graphs to read them correctly. You will read the graph from bottom right to left. You will be going from 90-0 vs. 0-90 in a continuous spiral.



Small Chewbacca Belt Bowl

Color Key **B = Brown**
 G = Grey
 Bl = Black

- Rnd 1: With Brown, begin with 6 sc in Magic Circle (6)
- Rnd 2: Create 2 sc in each st of Rnd 1 (12)
- Rnd 3: * 2 sc in first st, 1 sc in the next st, repeat from * (18)
- Rnd 4: * 2 sc in first st, 1 sc in the next 2 st, repeat from * (24)
- Rnd 5: * 2 sc in first st, 1 sc in the next 3 st, repeat from * (30)
- Rnd 6: * 2 sc in first st, 1 sc in the next 4 st, repeat from * (36)
- Rnd 7: * 2 sc in first st, 1 sc in the next 5 st, repeat from * (42)
- Rnd 8: * 2 sc in first st, 1 sc in the next 6 st, repeat from * (48)
- Rnd 9: 48b
- Rnd 10: 2b, 6g, 2b, 3g, 2b, 6g, 2b, 3g, 2b, 6g, 2b, 3g, 2b, 6g, 1b
- Rnd 11: 2b, 6g, 2b, 3g, 2b, 6g, 2b, 3g, 2b, 6g, 2b, 3g, 2b, 6g, 1b
- Rnd 12: 2b, 6g, 2b, 3g, 2b, 6g, 2b, 3g, 2b, 6g, 2b, 3g, 2b, 6g, 1b

Rnd 13: 2b, 6g, 2b, 3g, 2b, 6g, 2b, 3g, 2b, 6g, 2b, 3g, 2b, 6g, 1b

Rnd 14: 2b, 6g, 2b, 3g, 2b, 6g, 2b, 3g, 2b, 6g, 2b, 3g, 2b, 6g, 1b, tie off and use invisible join

Rnd 15: 48 black

Rnd 16: 48 black

Rnd 17: 2b, 6g, 2b, 3g, 2b, 6g, 2b, 3g, 2b, 6g, 2b, 3g, 2b, 6g, 1b

Rnd 18: 2b, 6g, 2b, 3g, 2b, 6g, 2b, 3g, 2b, 6g, 2b, 3g, 2b, 6g, 1b

Rnd 19: 2b, 6g, 2b, 3g, 2b, 6g, 2b, 3g, 2b, 6g, 2b, 3g, 2b, 6g, 1b

Rnd 20: 2b, 6g, 2b, 3g, 2b, 6g, 2b, 3g, 2b, 6g, 2b, 3g, 2b, 6g, 1b

Rnd 21: 2b, 6g, 2b, 3g, 2b, 6g, 2b, 3g, 2b, 6g, 2b, 3g, 2b, 6g, 1b, tie off and use invisible join

Rnd 22: join brown with sc and sc in each st around, tie off using invisible join.



Medium R2D2 Bowl

Color Key

B = Blue

BL = Black

R = Red

G = Grey

Rnd 1: With Grey, begin with 6 sc in Magic Circle (6)

Rnd 2: Create 2 sc in each st of Rnd 1 (12)

Rnd 3: * 2 sc in first st, 1 sc in the next st, repeat from * (18)

Rnd 4: * 2 sc in first st, 1 sc in the next 2 st, repeat from * (24)

Rnd 5: * 2 sc in first st, 1 sc in the next 3 st, repeat from * (30)

Rnd 6: * 2 sc in first st, 1 sc in the next 4 st, repeat from * (36)

Rnd 7: * 2 sc in first st, 1 sc in the next 5 st, repeat from * (42)

Rnd 8: * 2 sc in first st, 1 sc in the next 6 st, repeat from * (48)

Rnd 9: * 2 sc in first st, 1 sc in the next 7 st, repeat from * (54)

Rnd 10: * 2 sc in first st, 1 sc in the next 8 st, repeat from * (60)

Rnd 11: * 2 sc in first st, 1 sc in the next 9 st, repeat
from * (66)

Rnd 12: 66b

Rnd 13: 25g, 2b1, 1g, 2r, 36g

Rnd 14: 25g, 2b1, 1g, 2r, 36g

Rnd 15: 28g, 9b, 29g

Rnd 16: 28g, 3b, 3b1, 3b, 29g

Rnd 17: 28g, 2b, 5b1, 2b, 29g

Rnd 18: 28g, 2b, 5b1, 2b, 29g

Rnd 19: 28g, 2b, 5b1, 2b, 29g

Rnd 20: 28g, 3b, 3b1, 3b, 29g

Rnd 21: 28g, 9b, 29g

Rnd 22: 66g

Rnd 23: 1g, 8b, 3g, 8b, 3g, 8b, 3g, 8b, 3g, 8b, 3g, 8b, 2g

Rnd 24: 1g, 8b, 3g, 8b, 3g, 8b, 3g, 8b, 3g, 8b, 3g, 8b, 2g

Rnd 25: sc in each st around with grey, tie off using
invisible join

Rnd 26: join blue with sc and sc in each st around, tie off
using invisible join



Large TIE Fighter Bowl

Color Key **W = White**

B = Black

- Rnd 1: With White, begin with 6 sc in Magic Circle (6)
- Rnd 2: Create 2 sc in each st of Rnd 1 (12)
- Rnd 3: * 2 sc in first st, 1 sc in the next st, repeat from * (18)
- Rnd 4: * 2 sc in first st, 1 sc in the next 2 st, repeat from * (24)
- Rnd 5: * 2 sc in first st, 1 sc in the next 3 st, repeat from * (30)
- Rnd 6: * 2 sc in first st, 1 sc in the next 4 st, repeat from * (36)
- Rnd 7: * 2 sc in first st, 1 sc in the next 5 st, repeat from * (42)
- Rnd 8: * 2 sc in first st, 1 sc in the next 6 st, repeat from * (48)
- Rnd 9: * 2 sc in first st, 1 sc in the next 7 st, repeat from * (54)
- Rnd 10: * 2 sc in first st, 1 sc in the next 8 st, repeat from * (60)
- Rnd 11: * 2 sc in first st, 1 sc in the next 9 st, repeat from * (66)
- Rnd 12: * 2 sc in first st, 1 sc in the next 10 st, repeat from * (72)

Rnd 13: * 2 sc in first st, 1 sc in the next 11 st, repeat from * (78)

Rnd 14: * 2 sc in first st, 1 sc in the next 12 st, repeat from * (84)

Rnd 15: * 2 sc in first st, 1 sc in the next 13 st, repeat from * (90)

Rnd 16: sc in each st around

- In this row you will begin doing color changes. See instructions at top of pattern or photo tutorial at bottom of page for help

Rnd 17: 7w, 1b, 9w, 1b, 11w, 1b, 9w, 1b, 11w, 1b, 9w, 1b, 11w, 1b, 9w, 1b, 6w

Rnd 18: 6w, 2b, 9w, 2b, 9w, 2b, 9w, 2b, 9w, 2b, 9w, 2b, 9w, 2b, 9w, 2b, 5w

Rnd 19: 5w, 2b, 4w, 3b, 4w, 2b, 7w, 2b, 4w, 3b, 4w, 2b, 7w, 2b, 4w, 3b, 4w, 2b, 4w

Rnd 20: 5w, 2b, 3w, 5b, 3w, 2b, 7w, 2b, 3w, 5b, 3w, 2b, 7w, 2b, 3w, 5b, 3w, 2b, 4w

Rnd 21: 5w, 2b, 2w, 7b, 2w, 2b, 7w, 2b, 2w, 7b, 2w, 2b, 7w, 2b, 2w, 7b, 2w, 2b, 4w

Rnd 22: 5w, 6b, 3w, 6b, 7w, 6b, 3w, 6b, 7w, 6b, 3w, 6b, 7w, 6b, 3w, 6b, 4w

Rnd 23: 5w, 6b, 3w, 6b, 7w, 6b, 3w, 6b, 7w, 6b, 3w, 6b, 7w, 6b, 3w, 6b, 4w

Rnd 24: 5w, 2b, 2w, 7b, 2w, 2b, 7w, 2b, 2w, 7b, 2w, 2b, 7w, 2b, 2w, 7b, 2w, 2b, 4w

Rnd 25: 5w, 2b, 3w, 5b, 3w, 2b, 7w, 2b, 3w, 5b, 3w, 2b, 7w, 2b, 3w, 5b, 3w, 2b, 4w

Rnd 26: 5w, 2b, 4w, 3 b, 4w, 2b, 7w, 2b, 4w, 3b, 4w, 2b, 7w, 2b, 4w, 3b, 4w, 2b, 4w

Rnd 27: 6w, 2b, 9 w, 2 b, 9w, 2b, 9w, 2b, 9w, 2b, 9w, 2b, 9w, 2b, 9w, 2b, 5w

Rnd 28: 7w, 1b, 9w. 1b, 11w, 1b, 9w, 1b, 11w, 1b, 9w, 1b, 11w, 1b, 9w, 1b, 6w

Rnd 29: sc in each st around with white, tie off using invisible join.

Rnd 30: sc in each st around with black, tie off using invisible join.

Finishing Notes:

- Weave in all ends and shape bowl/basket with hand. The dense fabric that you create by carrying the yarn throughout your project really helps your bowl/basket to keep its shape.

This is an original pattern, designed and written by Angela Warren-Mixson of Crafty Ridge. Do not share, sell or redistribute this pattern as your own. You are more than welcome to gift, donate or sell items that you make from the pattern but do not use any photos from this pattern to sell your own product. Please use photos of your own work. Please remember to credit Crafty Ridge as the designer. Thank you.

If you have any questions or concerns regarding this pattern please send me a message at any of the links below.

www.Facebook.com/CraftyRidge

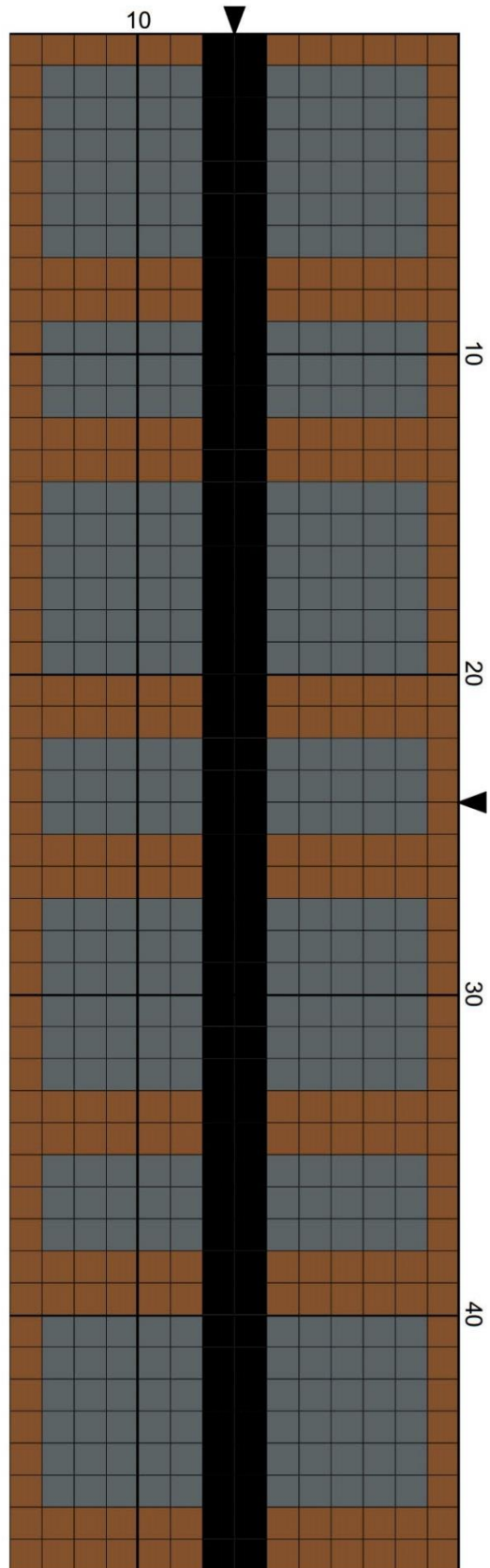
*Crafty Ridge patterns can be found at
www.CraftyRidge.com*

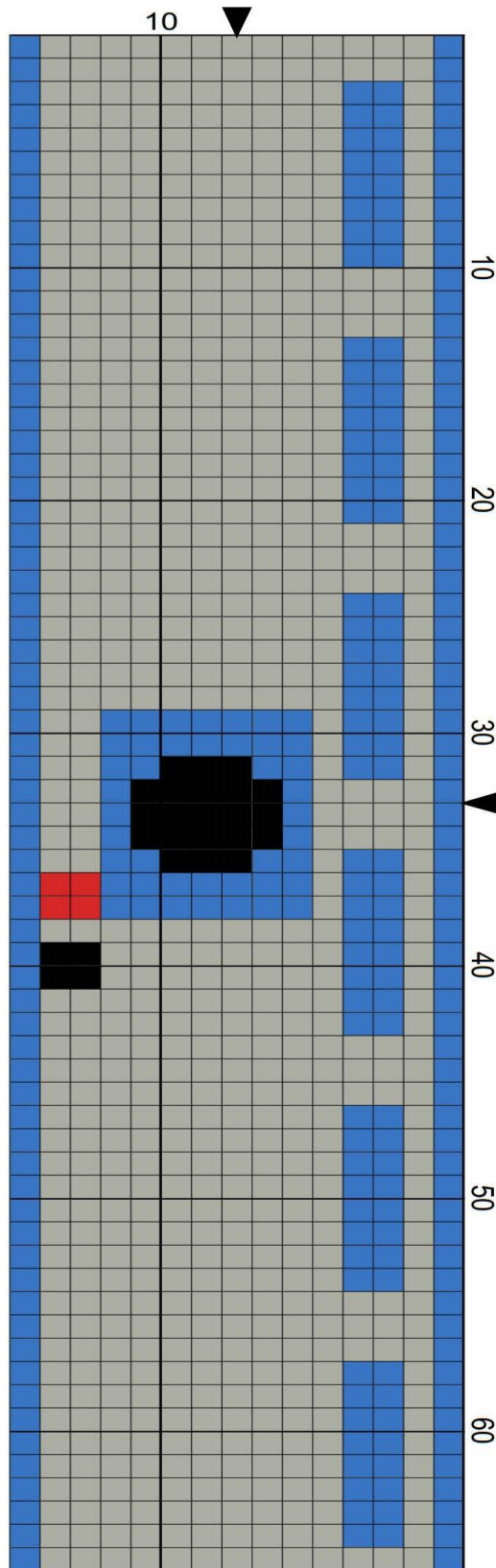
Ravelry at <http://www.ravelry.com/designers/crafty-ridge>

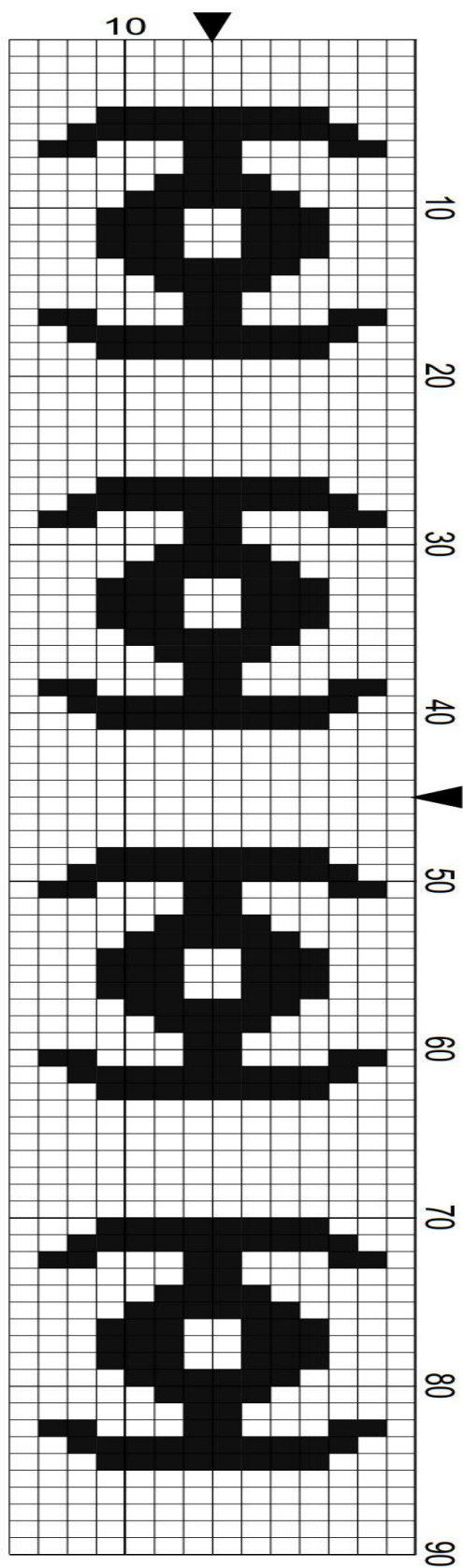
Etsy at www.CraftyRidge.Etsy.com

Craftsy at <http://www.craftsy.com/user/747395/pattern-store>

Etsy at www.CraftyRidge.Etsy.com







TIE Fighters

Nerdy Nesting Bowls

DW Series

By Crafty Ridge



Designed by Angela Warren-Mixson
Of Crafty Ridge Designs
CraftyRidge@gmail.com
www.Facebook.com/CraftyRidge



**Perfect for your desk or
bookshelf!**

Materials

- Yarn: Worsted Weight, 2.5 oz. See Color Key above each bowl for colors
- Hook: G / 4.0 mm
- Notions: Yarn needle, stitch marker

Sizing

- These measurements are approximated, and actual subjects may vary.
- Small Dalek Bowl measures 3.5" wide by 4" tall

Medium Bowtie, Scarf and 3D Glasses Bowls measure 5" wide by 4" tall

Large Tardis Bowl measures 7" wide by 4" tall

- Gauge: 4sc and 5 rows is 1" Gauge done in sc with G hook

Pattern Key

- Ch: Chain
- Sc: Single Crochet
- Sl St: Slip Stitch

Experience Level

- Advanced Beginner

Skills Necessary

- Basic Single Crochet
- Basic Color Changing

What is Tapestry Crochet? Tapestry crochet is basic crochet stitches with the use of more than one color

- If you know how to crochet and can do a basic single crochet and change colors than you already know the basics of tapestry crochet.
- Unlike in Intarsia (currently popular with graphghans) our additional color or colors is carried along while you make your stitches.
- The color you are not using stays hidden on the inside of those stitches, until you want to switch colors.

Basic Single Crochet: Insert hook in indicated stitch, yarn over, pull up loop, yarn over, pull through both loops.

Color changes: Continue with your Basic Single Crochet working up until the stitch before your color change, insert hook in indicated stitch, yarn over, pull up loop, STOP HERE, this is where the new color comes in. You will then use the new color to pull through both loops, finishing this stitch and then beginning the next single crochet with the new color.

Special Pattern Notes:

- Entire pattern is worked in a continuous spiral until the last row.
- To keep track of progress use a stitch marker at the beginning of each row.
- You will carry the yarn you are not using throughout the pattern.
- Be mindful of tension when starting new colors, pulling them to tight will cause puckering in your finished piece. Leaving them to loose will cause them to peak out a bit more on the wrong side.
- I begin with a Magic Circle; however you can use the chain 3 method if it is more comfortable to you.
- I will write out the rows with color changes as such: 5w, 4b, 3w (This will indicate the amount of stitches in each color. 5 white, 4 black, 3 white)
- You can also refer to graphed images at bottom of each pattern for color changes. You will need to turn page with graphs to read them correctly. You will read the graph from bottom right to left. You will be going from 90-0 vs. 0-90 in a continuous spiral.



Small Dalek Bowl

Color Key

B = Black

G = Grey

Rnd 1: Using Grey, begin with 6 sc in Magic Circle (6)

Rnd 2: Create 2 sc in each st of Rnd 1 (12)

Rnd 3: * 2 sc in first st, 1 sc in the next st, repeat from * (18)

Rnd 4: * 2 sc in first st, 1 sc in the next 2 st, repeat from * (24)

Rnd 5: * 2 sc in first st, 1 sc in the next 3 st, repeat from * (30)

Rnd 6: * 2 sc in first st, 1 sc in the next 4 st, repeat from * (36)

Rnd 7: * 2 sc in first st, 1 sc in the next 5 st, repeat from * (42)

Rnd 8: * 2 sc in first st, 1 sc in the next 6 st, repeat from * (48)

Rnd 9: 48b

Rnd 10-11: 48g

- In the next row you will begin doing color changes. See instructions at top of pattern or photo tutorial at bottom of page for help

Rnd 12-14: 2g, 3b, 3g, 3b, 3g, 3b, 3g, 3b, 3g, 3b, 3g, 3b, 3g, 3b, 1g

Rnd 15-16: 48g

Rnd 17-19: 2g, 3b, 3g, 3b, 3g, 3b, 3g, 3b, 3g, 3b, 3g, 3b,
3g, 3b, 3g, 3b, 1g

Rnd 20-21: 48g

Rnd 22: 48b, tie off and weave in ends



Medium Bowl

Color Key

B = Brown

T = Tan

W = White

R = Red

Bowtie Bowl

- Rnd 1: Using Brown, begin with 6 sc in Magic Circle (6)
- Rnd 2: Create 2 sc in each st of Rnd 1 (12)
- Rnd 3: * 2 sc in first st, 1 sc in the next st, repeat from * (18)
- Rnd 4: * 2 sc in first st, 1 sc in the next 2 st, repeat from * (24)
- Rnd 5: * 2 sc in first st, 1 sc in the next 3 st, repeat from * (30)
- Rnd 6: * 2 sc in first st, 1 sc in the next 4 st, repeat from * (36)
- Rnd 7: * 2 sc in first st, 1 sc in the next 5 st, repeat from * (42)
- Rnd 8: * 2 sc in first st, 1 sc in the next 6 st, repeat from * (48)
- Rnd 9: * 2 sc in first st, 1 sc in the next 7 st, repeat from * (54)

Rnd 10: * 2 sc in first st, 1 sc in the next 8 st, repeat from * (60)

Rnd 11: * 2 sc in first st, 1 sc in the next 9 st, repeat from * (66)

- In the next row you will begin doing color changes. See instructions at top of pattern or photo tutorial at bottom of page for help

Rnd 12: 23t, 6b, 9w, 6b, 22t

Rnd 13: 23t, 6b, 9w, 6b, 22t

Rnd 14: 22t, 3b, 4r, 9w, 4r, 3b, 21t

Rnd 15: 21t, 3b, 6r, 8w, 6r, 3b, 20t

Rnd 16: 20t, 4b, 7r, 1w, 3r, 1w, 7r, 4b, 19t

Rnd 17: 19t, 5b, 7r, 1w, 3r, 1w, 7r, 5b, 18t

Rnd 18: 18t, 6b, 7r, 1w, 3r, 1w, 7r, 6b, 17t

Rnd 19: 17t, 7b, 7r, 1w, 3r, 1w, 7r, 7b, 16t

Rnd 20: 16t, 8b, 7r, 1w, 3r, 1w, 7r, 8b, 15t

Rnd 21: 15t, 9b, 7r, 1w, 3r, 1w, 7r, 9b, 14t

Rnd 22: 16t, 8b, 6r, 7w, 6r, 8b, 15t

Rnd 23: 17t, 8b, 4r, 9w, 4r, 8b, 16t

Rnd 24: 18t, 8b, 15w, 8b, 17t

Rnd 25: 19t, 7b, 15w, 7b, 18t, tie off and weave in ends



Medium Scarf Bowl

Color Key

G = Green

B = Brown

Y = Yellow

BL = Blue

R = Red

T = Tan

- Rnd 1: Using Brown, begin with 6 sc in Magic Circle (6)
- Rnd 2: Create 2 sc in each st of Rnd 1 (12)
- Rnd 3: * 2 sc in first st, 1 sc in the next st, repeat from * (18)
- Rnd 4: * 2 sc in first st, 1 sc in the next 2 st, repeat from * (24)
- Rnd 5: * 2 sc in first st, 1 sc in the next 3 st, repeat from * (30)
- Rnd 6: * 2 sc in first st, 1 sc in the next 4 st, repeat from * (36)
- Rnd 7: * 2 sc in first st, 1 sc in the next 5 st, repeat from * (42)
- Rnd 8: * 2 sc in first st, 1 sc in the next 6 st, repeat from * (48)
- Rnd 9: * 2 sc in first st, 1 sc in the next 7 st, repeat from * (54)
- Rnd 10: * 2 sc in first st, 1 sc in the next 8 st, repeat from * (60)

Rnd 11: * 2 sc in first st, 1 sc in the next 9 st, repeat from * (66)

- In the next row you will begin doing color changes. See instructions at top of pattern or photo tutorial at bottom of page for help

Rnd 12-13: 66g

Rnd 14-17: 66b

Rnd 18: 66y

Rnd 19-20: 66bl

Rnd 21-22: 66r

Rnd 23-24: 66t

Rnd 25: 66t, tie off and weave in ends



Medium 3D Glasses Bowl

Color Key

G = Grey

W = White

B = Blue

R = Red

- Rnd 1: Using Grey, begin with 6 sc in Magic Circle (6)
- Rnd 2: Create 2 sc in each st of Rnd 1 (12)
- Rnd 3: * 2 sc in first st, 1 sc in the next st, repeat from * (18)
- Rnd 4: * 2 sc in first st, 1 sc in the next 2 st, repeat from * (24)
- Rnd 5: * 2 sc in first st, 1 sc in the next 3 st, repeat from * (30)
- Rnd 6: * 2 sc in first st, 1 sc in the next 4 st, repeat from * (36)
- Rnd 7: * 2 sc in first st, 1 sc in the next 5 st, repeat from * (42)
- Rnd 8: * 2 sc in first st, 1 sc in the next 6 st, repeat from * (48)
- Rnd 9: * 2 sc in first st, 1 sc in the next 7 st, repeat from * (54)
- Rnd 10: * 2 sc in first st, 1 sc in the next 8 st, repeat from * (60)
- Rnd 11: * 2 sc in first st, 1 sc in the next 9 st, repeat from * (66)

- In the next row you will begin doing color changes.
See instructions at top of pattern or photo tutorial
at bottom of page for help

Rnd 12-14: 66g

Rnd 15: 20g, 9w, 8g, 9w, 20g

Rnd 16: 19g, 2w, 7r, 2w, 6g, 2w, 7b, 2w, 19g

Rnd 17: 18g, 2w, 9r, 2w, 4g, 2w, 9b, 2w, 18g

Rnd 18: 18g, 1w, 11r, 2w, 2g, 2w, 11b, 1w, 18g

Rnd 19: 18g, 1w, 11r, 6w, 11b, 1w, 18g

Rnd 20-21: 19w, 11r, 6w, 11b, 19w

Rnd 22: 66w

Rnd 23-24: 66g

Rnd: 25: 66g, tie off and weave in ends



Large Tardis Bowl

Color Key **W = White**
 BL = Black
 B - Blue

- Rnd 1: Using Blue, begin with 6 sc in Magic Circle (6)
 Rnd 2: Create 2 sc in each st of Rnd 1 (12)
 Rnd 3: * 2 sc in first st, 1 sc in the next st, repeat from * (18)
 Rnd 4: * 2 sc in first st, 1 sc in the next 2 st, repeat from * (24)
 Rnd 5: * 2 sc in first st, 1 sc in the next 3 st, repeat from * (30)
 Rnd 6: * 2 sc in first st, 1 sc in the next 4 st, repeat from * (36)
 Rnd 7: * 2 sc in first st, 1 sc in the next 5 st, repeat from * (42)
 Rnd 8: * 2 sc in first st, 1 sc in the next 6 st, repeat from * (48)
 Rnd 9: * 2 sc in first st, 1 sc in the next 7 st, repeat from * (54)

Rnd 10: * 2 sc in first st, 1 sc in the next 8 st, repeat
from * (60)

Rnd 11: * 2 sc in first st, 1 sc in the next 9 st, repeat
from * (66)

Rnd 12: * 2 sc in first st, 1 sc in the next 10 st, repeat
from * (72)

Rnd 13: * 2 sc in first st, 1 sc in the next 11 st, repeat
from * (78)

Rnd 14: * 2 sc in first st, 1 sc in the next 12 st, repeat
from * (84)

Rnd 15: * 2 sc in first st, 1 sc in the next 13 st, repeat
from * (90)

Rnd 16: sc in each st around

Rnd 17: 90bl

Rnd 18: 90b

- In the next row you will begin doing color changes.
See instructions at top of pattern or photo tutorial
at bottom of page for help

Rnd 19-26: 2b, 8w, 3b, 8w, 3b, 8w, 3b, 8w, 4b, 8w, 3b, 8w,
3b, 8w, 3b, 8w, 2b

Rnd 27: 90b

Rnd 28: 90bl

Rnd 29: 90b, tie off and weave in ends

Finishing Notes:

- Weave in all ends and shape bowl/basket with hand. The dense fabric that you create by carrying the yarn throughout your project really helps your bowl/basket to keep its shape.

This is an original pattern, designed and written by Angela Warren-Mixson of Crafty Ridge. Do not share, sell or redistribute this pattern as your own. You are more than welcome to gift, donate or sell items that you make from the pattern but do not use any photos from this pattern to sell your own product. Please use photos of your own work. Please remember to credit Crafty Ridge as the designer. Thank you.

If you have any questions or concerns regarding this pattern please send me a message at any of the links below.

www.Facebook.com/CraftyRidge

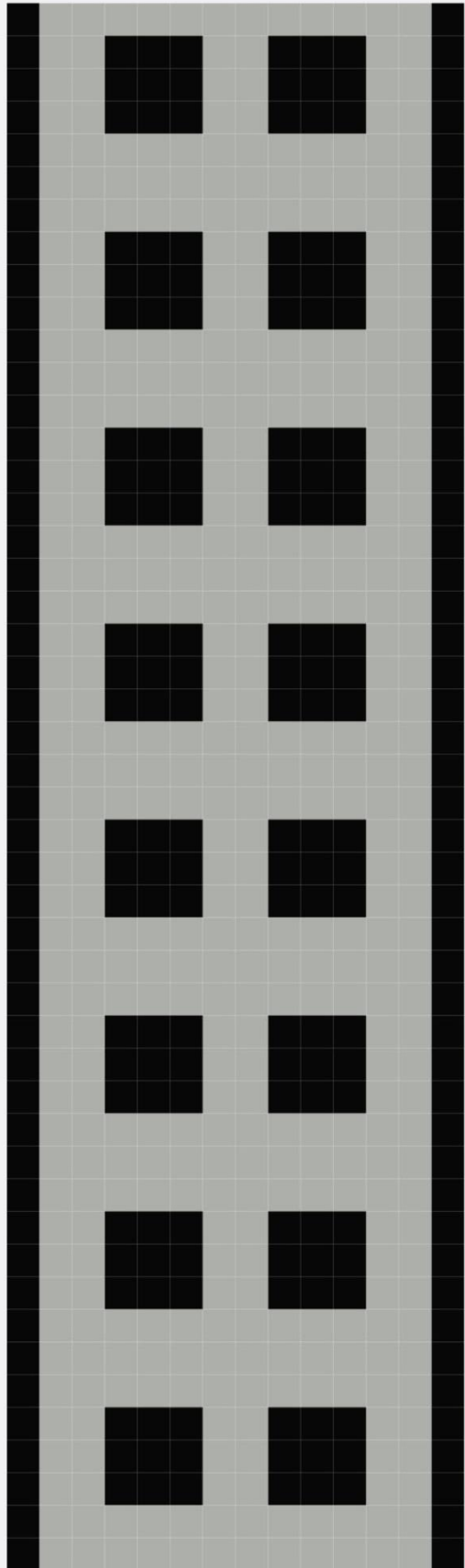
*Crafty Ridge patterns can be found at
www.CraftyRidge.com*

Ravelry at <http://www.ravelry.com/designers/crafty-ridge>

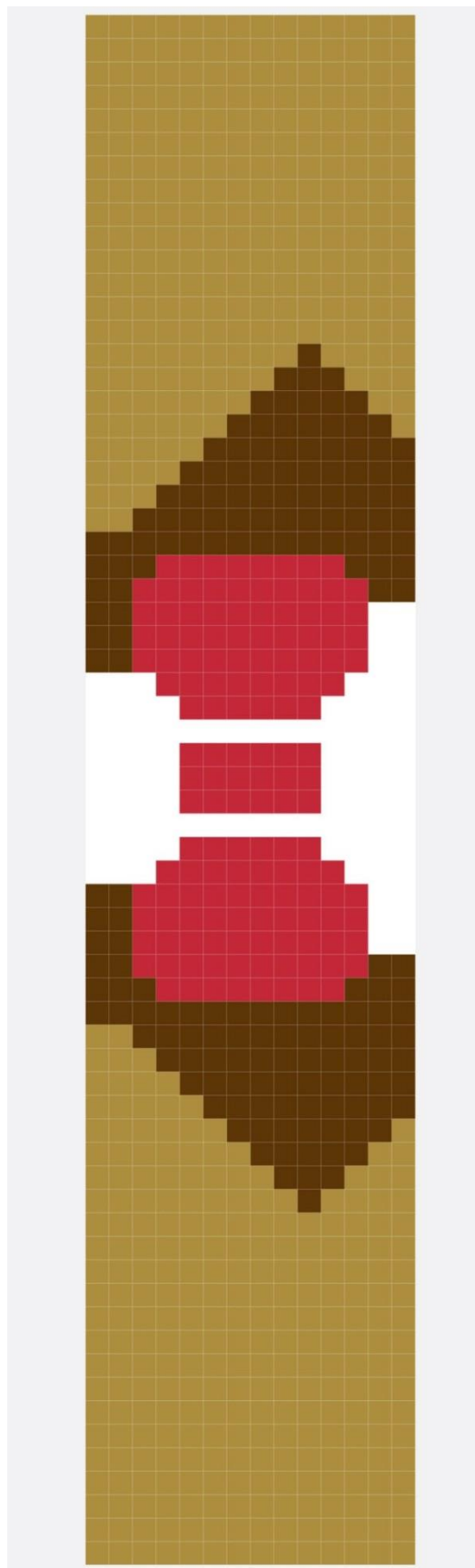
Etsy at www.CraftyRidge.Etsy.com

Craftsy at <http://www.craftsy.com/user/747395/pattern-store>

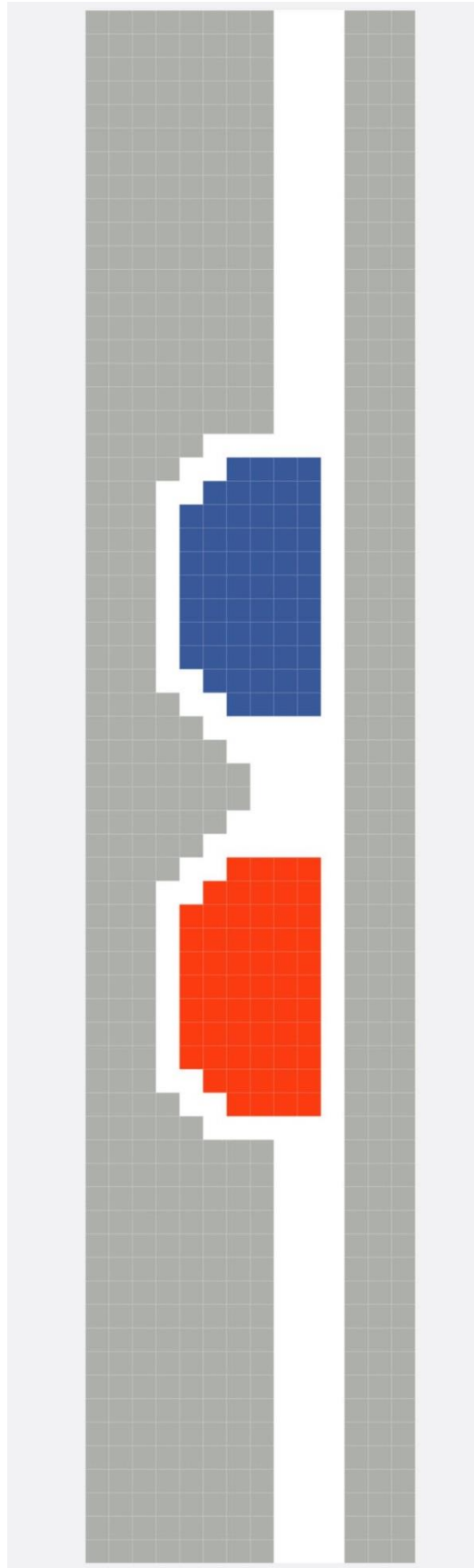
Etsy at www.CraftyRidge.Etsy.com

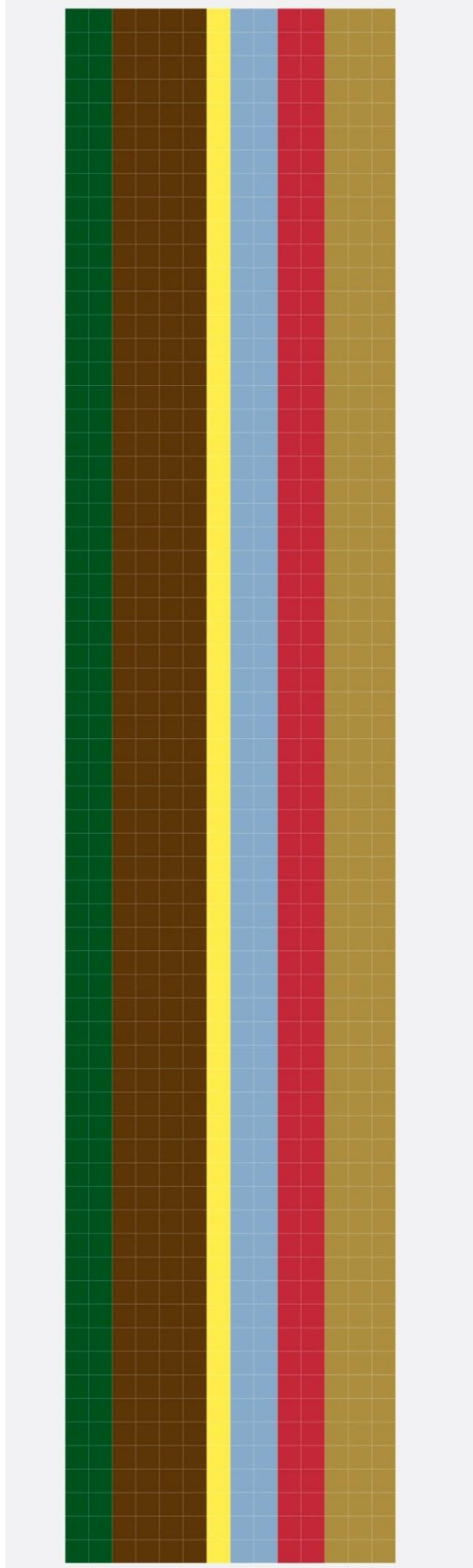


Dalek Bowl

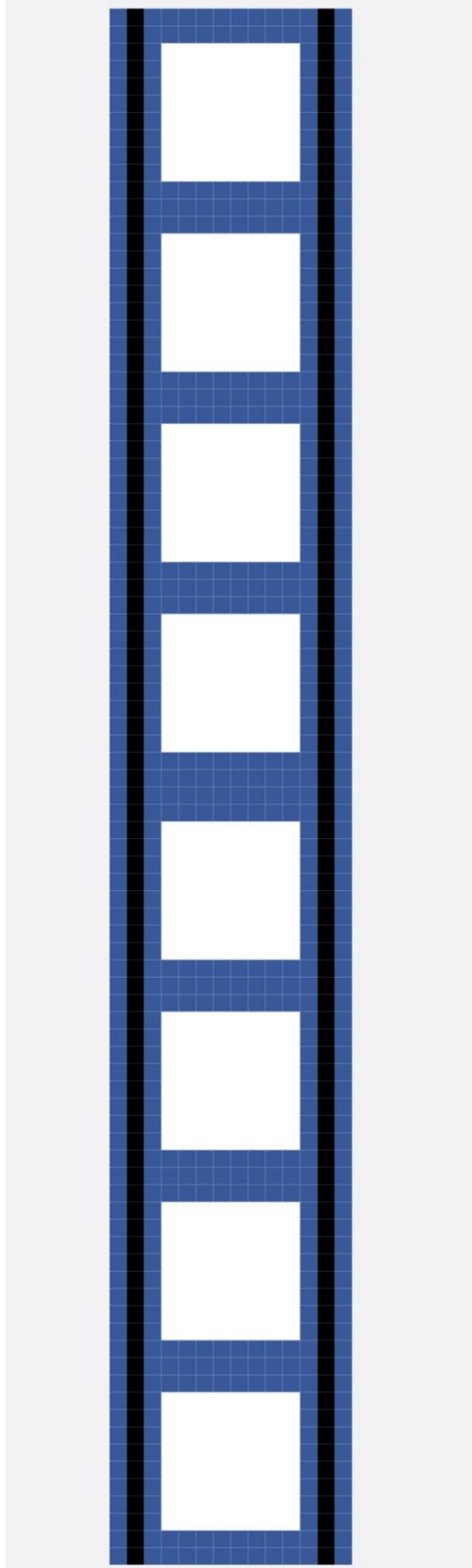


Bowtie Bowl





Scarf



Color Changing Made Simple



You will stop your previous stitch with both loops still on the hook.



Begin the next color by yarning over with the new color.



Pull the new color through both loops on hook. This finishes the last stitch and starts the next one.



Continue with the next stitch by putting your hook into the next stitch and yarning over. Continue with the steps to the basic single crochet.